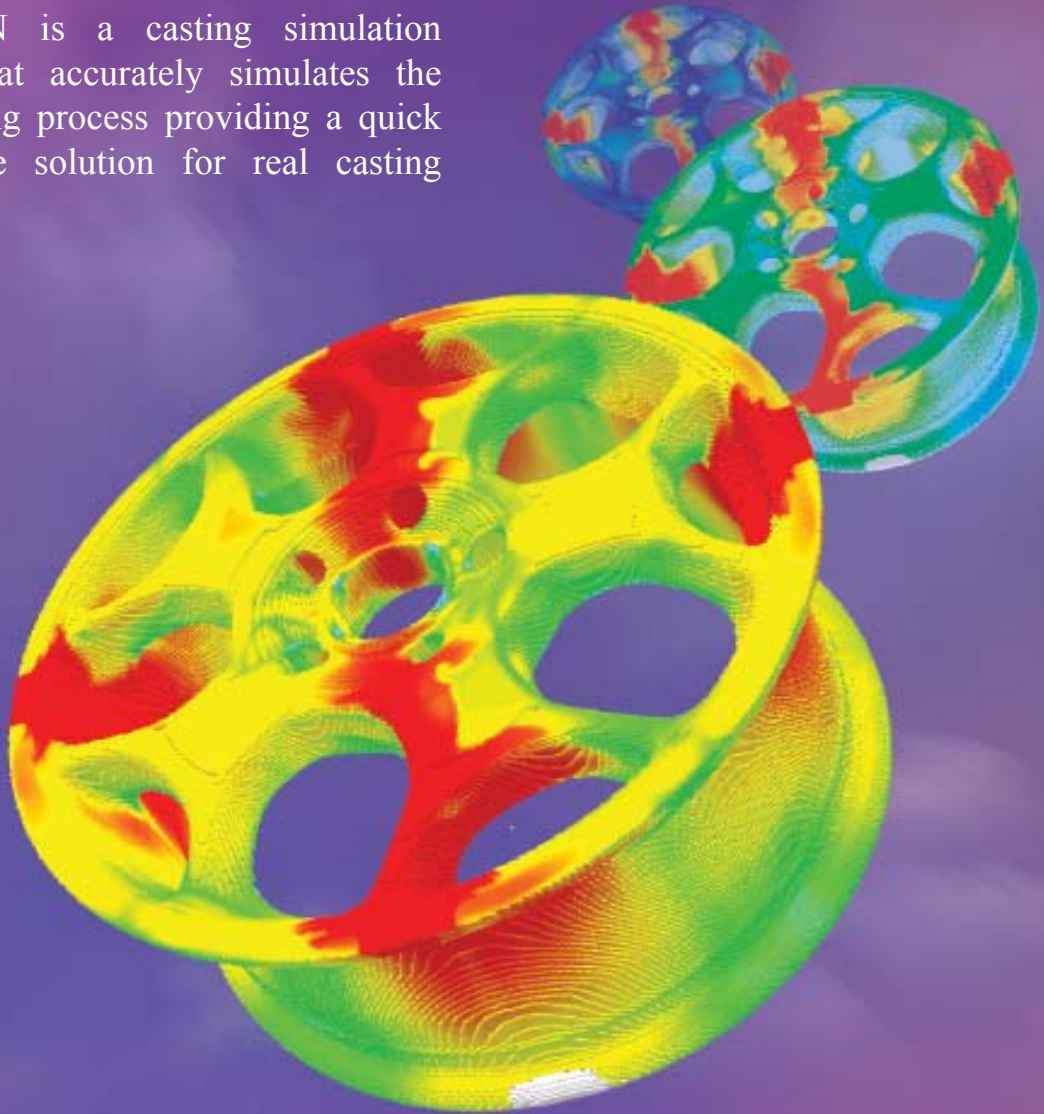


ADSTEFANTM providing complete casting solution

ADSTEFAN is a casting simulation software that accurately simulates the entire casting process providing a quick and reliable solution for real casting problems.



WHY ADSTEFAN ?

- Optimize casting process and design
- Troubleshoot casting problems in design phase
- Reduce development time and cost
- Provides complete understanding of casting process
- Improve product quality

APPLICATIONS

Products : Engine blocks, Heads, Transmissions, Laptop & Cell phone housing, etc.

Processes: Pressure Die casting
Sand & Shell Mold
Investment Casting
Thixomolding®

Materials: Steel, Aluminum, Magnesium, etc.



ADvanced
Solidification
TEchnology for
Foundry Aided
By Numerical
Simulation

MODULES

Pre-Processor

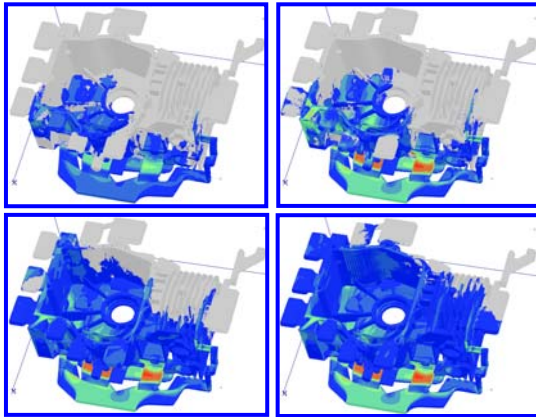
- Built in simplified 3D solid modeler
- Automatic FDM mesh generator
- Interface for CAD data (STL)
- Materials property database

Solver

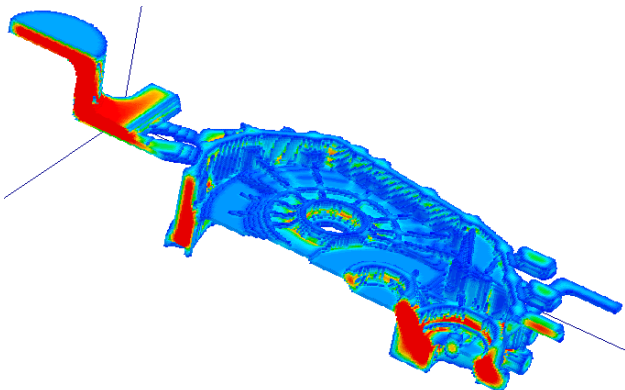
- Cyclic Steady state heat balance Method (CSM)
- Filling analysis
- Tilt casting analysis
- Shot sleeve analysis
- Solidification analysis
- Defects prediction (Niyama criterion, shrinkage)
- Thermal stress and deformation analysis

Post-Processor

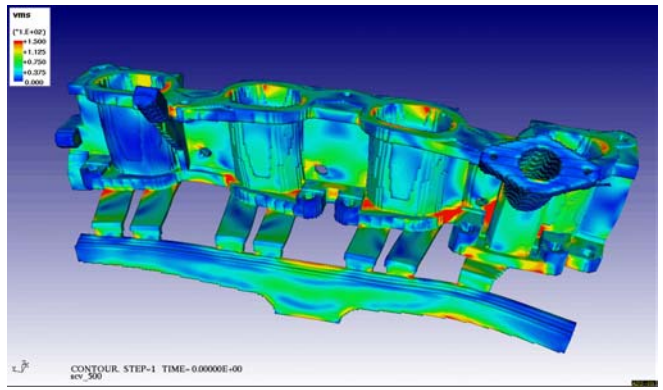
- Filling sequence, velocity and temperature distribution
- Temperature, melt front, etc. during solidification
- Open architecture facilitates easy hookup with other programs/post processors



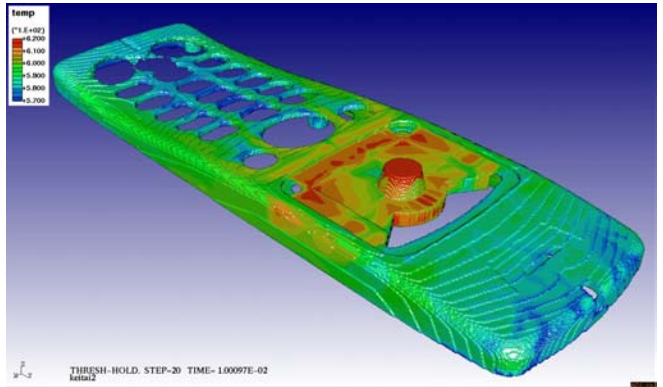
Filling Sequence of a Die Casting Part at Different Time Intervals with Temperature Distribution



Section Showing Casting Solidification Process



Thermal Stress Calculation Showing Deformation and Stress Distribution



Temperature Distribution After Filling

FEATURES

- User friendly GUI based on X Window and Motif
- Automatic mesh generation from STL data
- High speed calculation and effective memory allocation
- Accurate tracking of free surface during fluid flow
- Multiple predictive methods to identify defect size and location
- Wide variety of applications (Automotive, Electronics)
- Easy to use

SYSTEM REQUIREMENTS

Operating System	Microsoft Windows (98, 2000, XP), Linux, HP, SUN, SGI, IBM, COMPAQ
Typical Hardware Requirements	Processor: 2 GHz Memory: 512 MB Hard drive: 20 GB

Contact Information:

Frank Hunt, Hitachi America Ltd., R&D
34500 Grand River Avenue, Farmington Hills, MI 48335
Ph: (248) 473-6118 E-mail: frank.hunt@hap.com
<http://dm.hap.com>

Notes:

Design & specifications are subject to change without notice.

Products and company names herein may be trademarks of their owners.